

SUMMER CHALLENGE COLOR OUR WORLD™

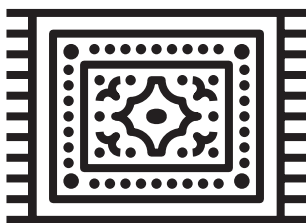


Tour the Library district and earn extra prizes as you *Journey through the Arts* this summer.

Explore a variety of **art mediums**, enjoy fun activities, and have this sheet initialed by a staff member at each branch you visit -- color in the icons, if you like!

Visit 8 out of 12 locations to earn a prize and an entry into the grand prize drawing!

AUGUSTA BRANCH



staff ☐ Fiber Arts

BOONE'S TRAIL BRANCH



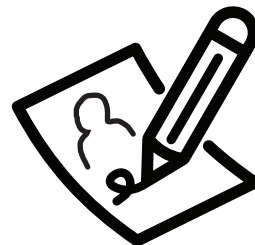
☐ Sculpture

CORPORATE
PARKWAY BRANCH



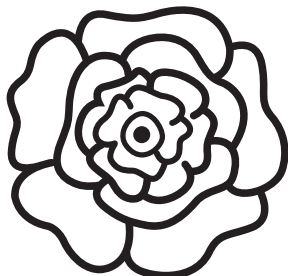
☐ Music

CLIFF VIEW BRANCH



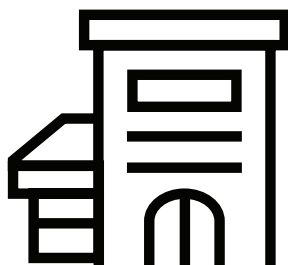
☐ Drawing

DEER RUN BRANCH



☐ Floral Arts

KATHRYN
LINNEMANN BRANCH



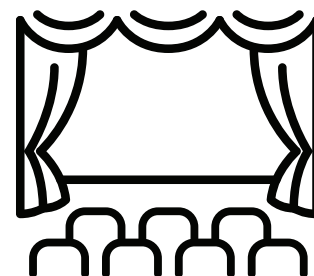
☐ Architecture

KISKER ROAD BRANCH



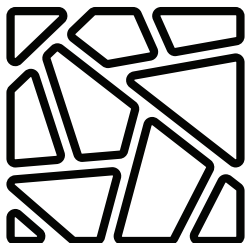
☐ Animation

MIDDENDORF-
KREDELL BRANCH



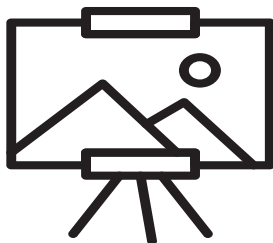
☐ Film/Theater

McCLAY BRANCH



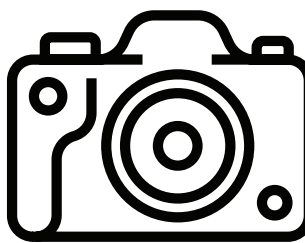
☐ Collage/Mosaic

SPENCER ROAD BRANCH



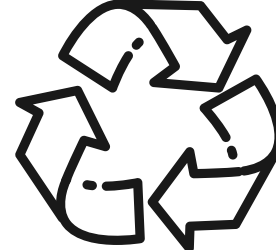
☐ Painting

WINGHAVEN® BRANCH



☐ Photography

BOOKMOBILE



☐ Recycled Art

Name: _____ Phone: _____
First Last



St. Charles City-County
Library

stchlibrary.org